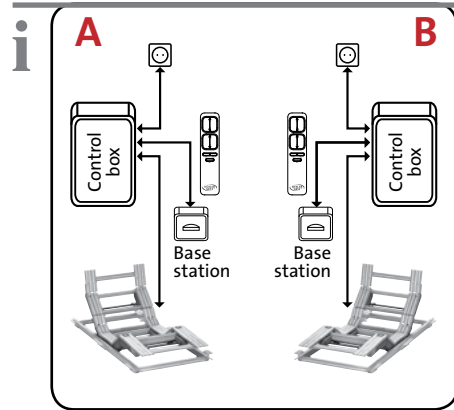


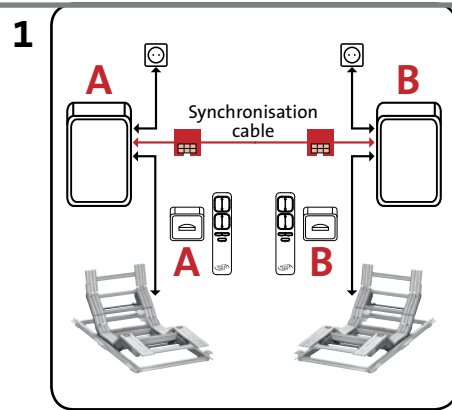
Synchronisation of motors of the frame insert with 2 motors, 2 motors plus and 4 motors



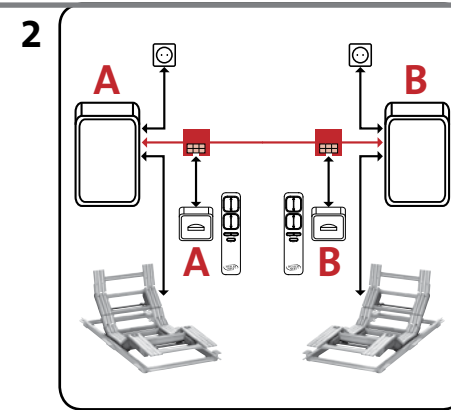
- ! Please read the instruction manual «Frame insert with motors» first before starting the synchronisation.
- The synchronisation works only with the remote control with integrated LED. Remote control and control box must have a single mode connection.



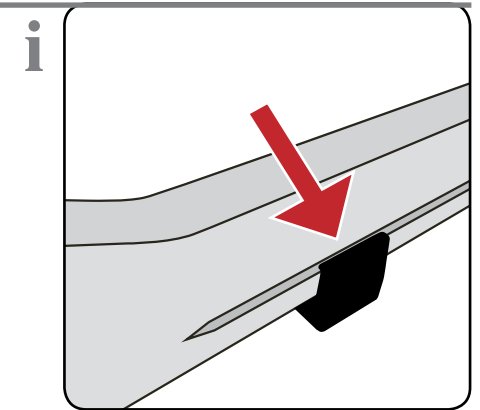
Actual state single mode: the motors are not synchronised



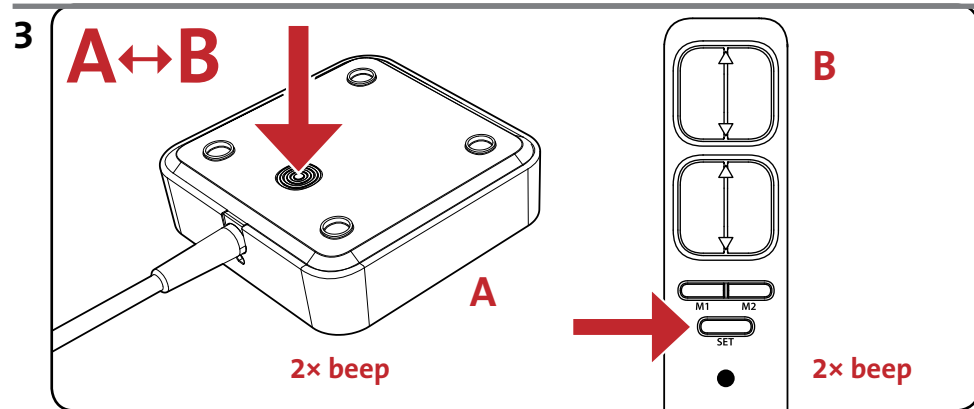
Disconnect base stations from the control boxes, then connect synchronization cables to the two control boxes



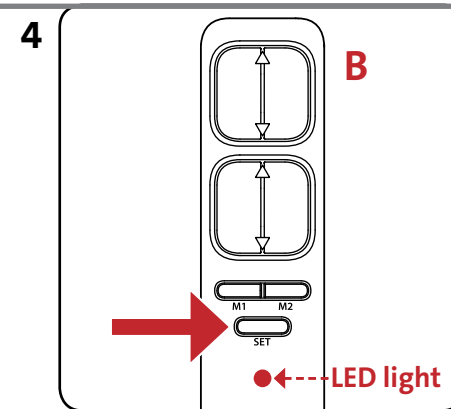
Connect base station A and B using the synchronization cable



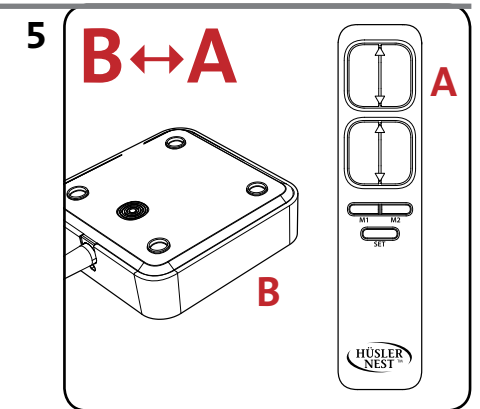
The brackets on the cable can be snapped in next to the motor, on the bottom of the frame insert cross member with a groove



- Keep the button on the lower side of the base station A pressed down for at least 6 seconds
- Caution: after 3 seconds the base station beeps once > do not release the button
- Keep it pressed down for a further 3 seconds until the base station beeps once
- Release the button
- Briefly press the SET button of the remote control B within 8 seconds (2 beeps)



- Keep the SET button of the remote control B down for 9 seconds. The synchronization has been completed when the LED on the remote control lights up red.



- Repeat actions 3 and 4, but with the base station B and the remote control A

- ! These instructions apply to the same extent for frame inserts with 2 motors, 2 motors plus and 4 motors.

- i For each remote control, 2 different lying positions can be stored in synchronisation mode.

- i If necessary, reset the system to single mode: press the SET button for 9 seconds until the LED on the remote control lights up green.

● Synchronisation mode

● Single mode